

The Leopard's Journey

María Cortés



The Leopard's Journey



MARÍA CORTÉS

The Leopard's Journey

Presented at

The Blue Robin House

21 May – 22 June 2026

Calle Justiniano, 3
28004 Madrid



The Leopard's Journey

The Leopard's Journey is a series born from inner reflection and a desire to give form to an intuitive and intimate voice. Each painting opens a threshold between the visible and the invisible, the wild and the spiritual.

The leopard emerges as an elegant and enigmatic presence, but also as a symbol of instinct, consciousness, and inner guidance.

Mountains, water, open skies, and fragments of nature unfold alongside dreamlike architectures of leisure - swimming pools, gardens, and tennis courts - suspended like memories. These imagined landscapes, situated between reality and fiction, become territories through which the leopard moves freely, embodying both presence and mystery.

The presence of the panther introduces an additional layer of tension and balance: strength and stillness, control and instinct coexisting within the same visual space. The geometry of the tennis court, with its precise lines and measured proportions, contrasts with the fluidity of the natural landscape, creating a dialogue between order and freedom.

A palette of soft lavenders, butter yellows, watery blues, and coral pinks creates an atmosphere of quietness and contemplation.

The compositions invite a slower gaze, encouraging the viewer to look beyond what is immediately visible.

In this way, the leopard does not remain confined to the canvas; it continues its journey within the viewer, becoming a subtle reflection of the inner world.

Colour as a Construction of the Inner Landscape

In María Cortés' work, colour does not describe the landscape: it transforms it. Chromatic bands, the interplay between vivid and muted tones, and the coexistence of warm and cool palettes create spaces suspended between memory, intuition, and fiction.

Far from pursuing a naturalistic representation, the artist uses colour as an emotional architecture capable of altering the perception of time and space. Impossible skies, luminous waters, and geometric surfaces generate atmospheres of quiet contemplation where reality and imagination coexist in delicate balance.

Through this tension between artifice and contemplation, each painting becomes an inner territory rather than a specific place.

Artist's Statement

"Painting is my way of suspending time. Each work begins with an emotion, a journey, or an inner image guided by intuition. The leopard appears as a presence that embodies the silent and intuitive force that runs throughout my work."

María Cortés

MARÍA CORTÉS



Off the Wall, 2025. Acrylic on canvas. 130 × 160 cm. Signed and dated verso.

Off the Wall challenges conventional perceptions by bringing together elements of reality and the imagined.

In this painting, the leopard symbolizes freedom and instinctive strength in contrast to the rigid structure of the tennis court. The geometric lines of the court, typically associated with rules and discipline, intertwine with the vibrant presence of hedges and palm trees, creating a visual dialogue between order and spontaneity. Above, a sky composed of layered bands of colour introduces a dreamlike dimension, inviting the viewer to engage with the work from a broader perspective where boundaries begin to dissolve.

The title, *Off the Wall*, suggests both a departure from established conventions and an invitation to explore new dimensions of creativity and imagination. In this way, the painting not only challenges traditional perceptions but also celebrates the transformative power of art.

MARÍA CORTÉS



The Pink Moon and the Leopard, 2025. Acrylic on canvas. 97 × 130 cm. Signed and dated verso.

The Pink Moon and the Leopard was born under a mysterious synchronicity.

The sky had already been painted when, unknowingly, María Cortés chose that very day to create a pink moon—the same moon that was shining over the real world at that exact moment.

In this work, the leopard moves silently beside a curved lake, surrounded by lavender mountains and an atmosphere of quiet serenity. Above, the moon — a silent witness — watches over the scene like an invisible guide.

Nothing was planned, and yet everything seems to be exactly where it belongs. The painting speaks of intuition, of a beauty that reveals itself effortlessly, and of those presences that accompany us even when they remain unseen. The leopard embodies that silent force within us which, like the moon itself, appears precisely when it is needed.

The work becomes a celebration of the moment — of that which is felt before it is understood.

MARÍA CORTÉS



The Leopard and the Pool, 2025
Acrylic on canvas. 97 × 130 cm. Signed and dated verso.

This work evokes the artist's memories of the coves of Mallorca, with their tranquil turquoise waters and luminous coastlines that become spaces for contemplation.

While painting it, María Cortés recalled *The Crossing of the Styx by Landscape with Charon Crossing the Styx*, a work she had studied closely for its extraordinary treatment of landscape. Here, she places the leopard — a symbol of intuition and inner strength — at the edge of a swimming pool, creating a threshold between nature and architecture.

Colour and geometry merge within a dreamlike atmosphere where stillness and movement coexist, inviting the viewer into a landscape suspended between memory, imagination, and reflection.

MARÍA CORTÉS



The Panther and the Tennis Court, 2026
Acrylic on canvas. 130 × 160 cm. Signed and dated verso.

The Panther and the Tennis Court presents a striking and unexpected encounter between instinct and structure.

A black panther moves directly towards the viewer across an immaculate blue tennis court, its gaze unwavering, almost confrontational.

The surrounding landscape draws inspiration from Lake Como: a tranquil turquoise lake, layered mountains, and a Mediterranean villa framed by cypress trees and lush gardens. Above, a sky built from soft horizontal bands of colour creates an atmosphere suspended beyond time.

The rigid geometry of the tennis court contrasts with the fluid presence of the animal. Silent, composed, and powerful, the panther becomes a symbol of inner strength moving through a world defined by order and boundaries.

There is no narrative resolution, only a moment charged with both tension and stillness.

The viewer is placed directly in its path, invited to enter a space where serenity and intensity coexist simultaneously.



Come Closer, Slowly, 2026
Acrylic on canvas. 110 × 110 cm. Signed and dated verso.

Come Closer, Slowly forms part of The Leopard's Journey, a series in which each landscape becomes an emotional territory rather than a physical place.

Here, the invitation is not outward but inward. The viewer is not asked to approach the animal, but rather to enter a state of quiet attention.

The panther does not seek attention; it simply holds a presence. Its movement is minimal, yet it generates a subtle pull — a quiet force that invites the viewer to move closer, slowly and almost unconsciously.

In this context, Come Closer, Slowly also becomes a way of experiencing the painting itself: not through immediacy, but through gradual immersion. A silent approach guided more by instinct than intention.

The work creates a presence that transforms the surrounding space, not through intensity, but through a quiet and enduring atmosphere.

MARÍA CORTÉS



The Edge of Silence, 2026

Acrylic on canvas. 100 × 65 cm. Signed and dated verso.

At the edge of a still pool, a leopard remains suspended between presence and instinct.

The scene unfolds within a constructed landscape - ordered, geometric, and serene - yet the animal introduces a subtle disruption to that equilibrium.

Bands of colour stretch across the horizon, dissolving time and place into something that belongs equally to the real and the imagined. The water, motionless yet animated by a barely perceptible movement, becomes a threshold: a space of reflection, tension, and possibility.

Here, control and wild nature coexist without conflict. The leopard does not move, and yet it holds the entire scene in a state of quiet alertness.

A moment before something happens. Or perhaps just after.

MARÍA CORTÉS



On the Wall, 2026
Acrylic on canvas. 89 × 116 cm. Signed and dated verso.

For the first time, the leopard enters an interior space.

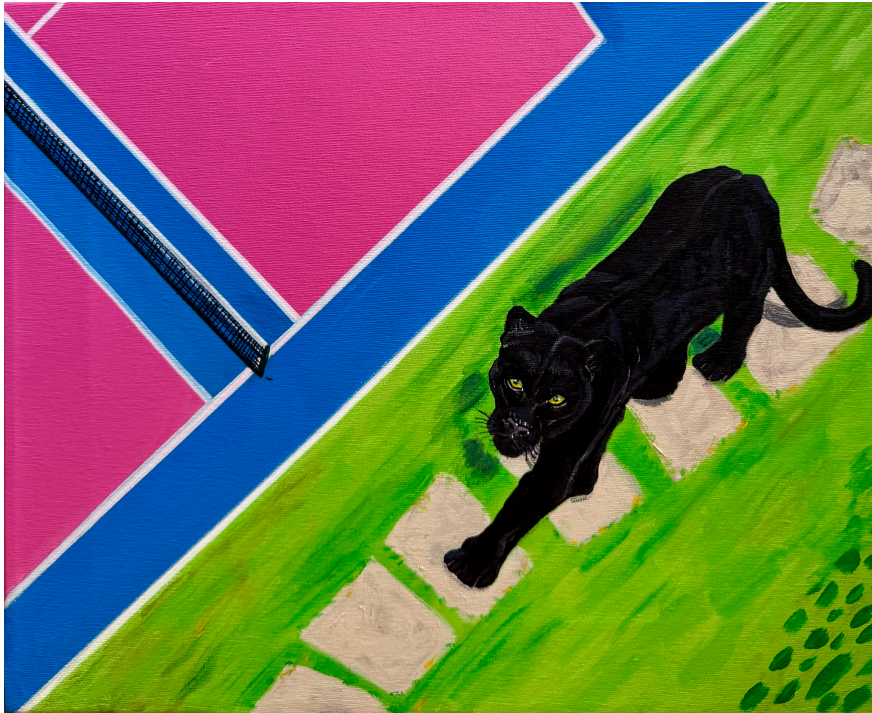
Set within an architectural environment - defined by a column, a wall, and a terrazzo floor - the scene shifts from the open landscape into a constructed space. Beyond it, bands of colour evoke a distant sunset, blurring the boundary between inside and outside.

A large unseen window reveals itself only through light: its shadow stretches across the floor, suggesting a presence that is felt even while remaining out of sight. The leopard moves silently through this space, no longer entirely wild, yet not domesticated. It inhabits a threshold between exterior and interior, instinct and structure.

On the Wall marks a moment of arrival.

Or perhaps a pause before crossing even further inward.

MARÍA CORTÉS



The Panther on the Tennis Court Path, 2026
Acrylic on canvas. 33 × 41 cm. Signed and dated verso.

In this work, a black panther moves silently along the edge of a tennis court, following a stone path that cuts through a landscape constructed through colour.

Viewed from an elevated perspective, the composition transforms an everyday scene into an emotional territory where geometry and instinct enter into dialogue.

The vibrant pink and blue tennis court introduces a space of order and structure, while the luminous green surroundings bring an organic and expansive energy. The panther - a silent presence and a symbol of intuition and inner strength - appears to move between these two worlds, inhabiting a threshold between control and freedom.

Its gaze, directed towards the viewer, breaks the distance and creates a sense of unexpected encounter. There is movement, but also a curious stillness: a suspended moment in which something seems about to happen.

As in other works from *The Leopard's Journey*, the landscape does not describe a real place, but an inner state — a space where presence, memory, and intuition coexist.

MARÍA CORTÉS



Miami Sunrise, 2024
Acrylic on canvas. 89 × 116 cm. Signed and dated verso.

In this work, the landscape is reduced to its essential elements: horizon, water, light, and colour. A yellow sun rises quietly above a vibrant surface where sky and sea seem to merge into a single luminous atmosphere.

Built through layers of intense oranges, warm pinks, and reflections of light across the water, the composition transforms a recognisable moment into an emotional experience suspended between reality and memory. The landscape ceases to represent a specific place and instead becomes a state of contemplation.

The surface of the water, animated by small flashes of light, introduces a subtle sense of movement within a scene otherwise dominated by stillness. A quiet tension emerges between vastness and intimacy, between the fleeting nature of the moment and its permanence in memory.

As in other works by María Cortés, colour moves beyond description to become an emotional language: a way of translating sensations, inner states, and moments that seem to exist outside of time.

MARÍA CORTÉS



About the Artist

María Cortés (Madrid, 1972) is a contemporary artist whose work creates symbolic landscapes where colour, energy, and spirituality merge into poetic atmospheres. Inspired by contemplation, travel, and the images that have shaped her life, she transforms memories and visions into dreamlike settings imbued with serenity and vitality.

Her paintings use colour as an emotional language, expressing inner states in transformation, while mountains, skies, and lakes evoke the intimate experience of seeing and self-discovery. Her work is held in private collections in Brazil, Puerto Rico, the Dominican Republic, Spain, and the United States.

Born into a family of art and antiques dealers and co-founder of MAS ARTE magazine, Cortés has developed a distinguished career within the international art world. Through her work with galleries including Coll & Cortés and Colnaghi, as well as through María Cortés Fine Art Consultancy, she has cultivated a refined visual sensibility that informs every aspect of her artistic practice.

MARÍA CORTÉS

Press

THE WORLD OF INTERIORS

OCTOBER 2025 £6.99



THE ART SCENE

8. IJAN DRAKAR is an American-born artist, raised but now living in the picturesque St. Sebastian region in New York. She has a passion for graphic abstraction of natural forms. Her work shows plants that are wild and free, creating a dreamy world that is both abstract and realistic. Some of her most notable works are scientific, creating a more realistic, detailed effect. Her work is organic and realistic in nature. Followed in 'Insta', at 'at' art and media, acrylic, mixed media, paper, gold leaf. Visit www.ijanandrakar.com or email ijanandrakar@gmail.com.

9. KRISTEN STEPHEN is a Toronto-based abstract artist working with bold ink on canvas. Her intuitive, layered process draws from the subconscious and spontaneous mark-making. 'Uplifted Blue' embodies this approach with its fluid forms and vivid depth. Follow kristenstephenart.com or email concepts@kristenstephenart.com.

10. SARAH NISOLE creates soft-stain paintings that unfold as she works. Water washes slowly, leaving traces of movement and time in pooled pigment and washes—modulations of presence, dissolution, and renewal. Visit sarahnisole.com or email sarah@nisole.com.

11. PHILIP CARTER MURPHY is an artist and maker based in South West London. Combining collage, colour, and composition, his graphic works hold a kinetic energy in design. Featured in 'Wednesday', '2025', '2024', '2023', collage and acrylic on canvas. Visit www.philipmurdyn.com or follow [philipmurdyn](https://www.instagram.com/philipmurdyn) on Instagram for his most recent commissions.

12. Quickly becoming known for her signature abstracts, TERRY BOOTH's work reads a capturing parallel between illustration and traditional folk art painting. With a passion for narrative, each piece is designed with this in mind. Inspired with themes of heroes, folk art and the sea. Visit www.suburbanart.com/terry-booth and follow [terryboothart](https://www.instagram.com/terryboothart) on Instagram.

13. JOY DAHLMANN's art embraces storytelling, transforming emotions and feelings into vibrant celebrations of life. Her bold, life-affirming works honour the uniqueness of every story, inviting viewers to rediscover joy, courage and wonder in their lives. Visit www.joydahlmann.com and follow [joydahlmann](https://www.instagram.com/joydahlmann) on Instagram.

14. London-based artist HEATHER GREEN explores a fusion of coherence through an ongoing exploration of natural processes and chemical interactions, favouring intricate and intricate. Green's compositions are both the highly and natural phenomena through that process, allowing forms and motifs to emerge, dissolve, and reconfigure, slipping between order and collapse. Visit www.heathergreen.co.uk and follow [heathergreenart](https://www.instagram.com/heathergreenart) on Instagram.

15. CONSTANCE ANNE is a London-based artist. The character in her paintings are ethereal with a discreet but powerful elegance. She captures the poetry of being human with elegant forms stretching creative across canvas. Her colour scheme evokes an unspoken mood for her audience. Visit www.constanceart.com or email constance@constanceart.com on Instagram.

16. MARÍA CORTÉS, Madrid-based artist, blends vibrant colour and dramatic landscapes with the refined use of a composition based by using ink with Old Masters. Her paintings evoke timeless worlds of emotion and allure, where visual poetry unfolds in a timeless dialogue. For more information, visit www.mariacortes.com or email maria@mariacortes.com on Instagram or email maria@mariacortes.com.

17. LILLIE BRADLEY is an artist from Stockholms who paints, draws and inspired by nature. She works with acrylic, oil and watercolour. She also makes graphic illustrations. The many inspirations come from different gardens, the vibrant colours she sees within herself. A recurring theme is to use the colours blue and green. For more information, visit www.lilliebradley.com or follow [lilliebradley](https://www.instagram.com/lilliebradley) on Instagram.

To appear on this page, call: 020 7512 2705 or email clara@worldofinteriors.co.uk

35

THE WORLD OF INTERIORS

NOVEMBER 2025 £6.99



BEYOND THE FRAME

1. DIANA ELAIN NARBOR is a self-taught contemporary artist based in New York City & Washington, DC. Her deep passion for conceptual thinking, maintaining creative freedom, and connecting with others can be seen in the bold and differing styles of every work. She creates her own world. Visit www.dianaelain.com or email dianaelain@art.com on Instagram.

2. Quickly becoming known for her signature abstracts, TERRY BOOTH's work reads a capturing parallel between illustration and traditional folk art painting. With a passion for narrative, each piece is designed with this in mind. Inspired with themes of heroes, folk art and the sea. Visit www.suburbanart.com/terry-booth and follow [terryboothart](https://www.instagram.com/terryboothart) on Instagram.

3. KATHY STAMLEY is an award-winning abstract artist and contemporary abstract based on the US West Coast. Her acrylic paintings and mixed media works explore vibrant and bold textures, creating a sense of depth and movement. Her work is both abstract and figurative, often featuring bold lines and vibrant colors. Visit www.kathyart.com or email kathy@kathyart.com on Instagram.

4. SANDRA ELISABETH NOBLE is a Swedish-born artist, known for her iconic graphic figures. She creates a world where women, animals, symbols and objects appear in a language of mythology. Painting in muted tones with gold accents and minimalist details, her work feels timeless, telling stories of power, faith and dignity. To see more, visit www.sandraelise.com or email sandra@elise.com on Instagram.

5. KUNSTBYSTPHILIP is a Berlin-based art brand, crafting bold, typographic wall art with a unique voice. Inspired by independent artist Sophie Calhoun, the studio's art tells a story that's personal, poetic, and designed to bring joy to modern interiors. Visit www.kunstbystphilip.com or email kunstbystphilip@art.com on Instagram.

6. CAMILLEAUX abstract compositions explore elemental forms—stone, smoke, water, and ash—layered with a subtle texture that bridges line art and design. Her hauntingly beautiful compositions reflect a strong connection to materials and place, while the subtle textures pattern across and follow www.camillea.com on Instagram.

7. KATELIN GRAY acrylic art tells an epic, layered tale that invites us to pause and notice beauty in the everyday. 'Herds' shows a bison prepared from a family heirloom plate, painted with tender attention to light and form. Influenced by mid-century masters such as Fairfield Porter and Milton Avery, Gray's mixed pieces carry nostalgia, comfort, and connection. To learn more, follow [kategraysart](https://www.instagram.com/kategraysart) on Instagram or visit www.kategraysart.com.

8. DIANA ELAIN NARBOR is a self-taught contemporary artist based in New York City & Washington, DC. Her deep passion for conceptual thinking, maintaining creative freedom, and connecting with others can be seen in the bold and differing styles of every work. She creates her own world. Visit www.dianaelain.com or email dianaelain@art.com on Instagram.

9. MARIAM SAHABYEV is a Canadian-based artist working in oil, acrylic, and mixed media. She is inspired by her French heritage, her painting investigates the interplay of organic forms, vibrant colors, and natural processes creating compositions that are both abstract and figurative. Visit www.mariamart.com or email [maria@mariaart.com](mailto:mariam@mariaart.com) on Instagram.

10. JOY DAHLMANN from Beckham is a mixed-media artist. Through vibrant colors and bold lines, she transforms memory and emotion into artworks that celebrate life, love and life's offerings. Her pieces honour the uniqueness of every story and invite you to see the world in a new light. Visit www.joydahlmann.com and follow [joydahlmann](https://www.instagram.com/joydahlmann) on Instagram.

11. KRISTEN STEPHEN is a Toronto-based abstract artist working with bold ink on canvas. Her intuitive, layered process draws from the subconscious and spontaneous mark-making. 'Uplifted Blue' embodies this approach with its fluid forms and vivid depth. Visit www.kristenstephenart.com or email concepts@kristenstephenart.com on Instagram.

12. MARÍA CORTÉS, Madrid-based artist, blends vibrant colour and dramatic landscapes with the refined use of a composition based by using ink with Old Masters. Her paintings evoke timeless worlds of emotion and allure, where visual poetry unfolds in a timeless dialogue. For more information, visit www.mariacortes.com or email maria@mariacortes.com on Instagram or email maria@mariacortes.com.

13. LILLIE BRADLEY is an artist from Stockholms who paints, draws and inspired by nature. She works with acrylic, oil and watercolour. She also makes graphic illustrations. The many inspirations come from different gardens, the vibrant colours she sees within herself. A recurring theme is to use the colours blue and green. For more information, visit www.lilliebradley.com or follow [lilliebradley](https://www.instagram.com/lilliebradley) on Instagram.

To appear on this page, call: 020 7512 2705 or email clara@worldofinteriors.co.uk

38

MARÍA CORTÉS

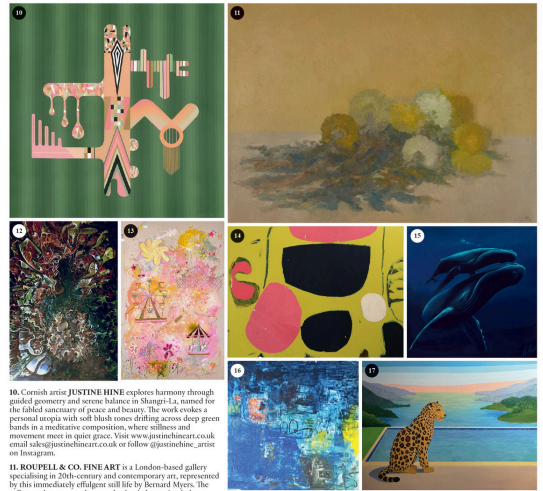
Press

THE WORLD OF INTERIORS

DECEMBER 2025 £6.99



The Mini Issue



10. Cornish artist JUSTINE HINE explores harmony through guided geometry and serene balance in Shangri-La, named for the fabled sanctuary of peace and beauty. The work evokes a personal utopia with soft blush tones drifting across deep green banks in a meditative composition, where stillness and movement meet in quiet grace. Visit www.justinehineart.co.uk or follow @justinehine_artist on Instagram.

11. ROUPELL & CO. FINE ART is a London-based gallery specialising in 20th-century and contemporary art, represented by this immediately effulgent still life by Bernard Morey. The gallery endearers in show works that balance visual pleasure with thought-provoking concepts. Visit roupellcofineart.com or follow @roupellcofineart on Instagram.

12. FERAY GILSIEVEN'S "Psycho-Organic Fantastical Narrative" blends subconscious psycho-epidemiological imagery with organic forms and fantastical associations. Through layered transformations of colours and figures, her work invites exploration of inner myths. Narrative becomes infinite possibilities of the collective subconscious. Visit feraygilsieven.com and follow @feraygilsievenart on Instagram.

13. JOY DAHLMANN, a Mixed Media Artist based in Beckham, creates visual narratives that balance emotion and lightness. Her works intertwine childlike intuition with artistic precision, inviting viewers to rediscover their own inner stories - poetic memories expressed through colour, texture, and feeling. Visit www.joydahlmann.de and follow @joydahlmann_kunstmisemide on Instagram.

14. PHILIP CARTER MADRICA is an artist and maker based in South West London. Combining collage, colour and composition, his graphic works tell a 45-year career in design. Pictured in 'Fig Tree', 2018, 122cm x 92cm. Collage and acrylic on canvas. Visit www.philipmadraca.com or follow @carterycarlo on Instagram for his most recent commissions.

15. HAYLAH ABRIGO is an artist and naturalist based in Honolulu, Hawaii. Pulling inspiration directly from her experiences as a diver, Abrigo

cultivates a deeper understanding of the underwater world through her practice. While facilitating scientific communication through creative expression, her work offers an opportunity to reflect on humanity's relationship to the ocean, the future of the planet, and what can be done to include the collective connection to the natural world. Visit www.haylahabrego.com and follow @haylahabrego on Instagram.

16. STUDIO JKP: Julie is a self-taught South African artist whose vibrant, playful works are a celebration of colour, texture and a nostalgic narrative expression of childhood memories. After spending decades in the high-pressure corporate world, Julie turned to painting as a creative release and a way to process stress and reconnect with a sense of freedom. Explore her collection 'Junkies' on Instagram.

17. MARÍA CORTÉS, a Madrid-based artist, blends vibrant colour and delicate landscapes with the refined eye of a connoisseur shaped by years dealing with Old Masters. Her paintings evoke symbolic worlds of emotion and stillness, where visual poetry unfolds in a timeless dialogue. Discover her new online exhibition "The Leopard's Journey" at mariaconcorart.com. Visit mariaconcorart.com or follow @mariaconcorart on Instagram.

To appear on this page, call: 020 732 5205 or email dawn@gondwanaz.co.uk

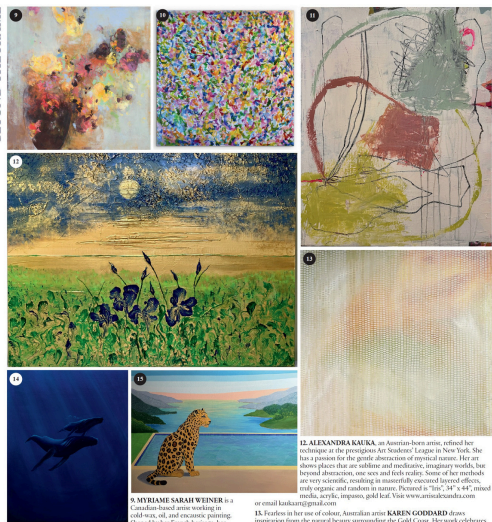
BEYOND THE FRAME

THE WORLD OF INTERIORS

JANUARY 2026 £6.99



BEYOND THE FRAME



10. MARIAM SARAH WEINER is a multi-disciplinary artist who works in painting, sculpture, and mixed media. Her work explores the intersection of nature and the human experience, often using organic forms and textures. Visit www.mariamweiner.com or follow @mariamweiner on Instagram.

11. CALIEGH PARSONS is a mixed media artist who paints intuitively. Layering acrylics, oil paints, and natural pigments, she creates vibrant, textured works that explore the intersection of nature and the human experience. Visit www.calieghparsons.com or follow @calieghparsons on Instagram.

12. LAURIE POEYER is an abstract artist based in San Diego. Drawing inspiration from nature and colorful botanicals, Laurie creates uniquely expressive paintings in jewel-toned hues that invite personal connection and evoke a sense of vibrant introspection from the viewer. Visit lauriepoeyer.com and follow @lauriepoeyer on Instagram.

13. KAREN GODDARD draws inspiration from the natural beauty surrounding her. Her work celebrates the organic shapes of ferns and fauna and her love of native flowers. Currently exhibiting, she continues discovery in her compositions, embracing authentic and bold expressions. Visit karengoddard.com and follow @karengoddard on Instagram.

14. HAYLAH ABRIGO is an artist and naturalist based in Honolulu, Hawaii. Pulling inspiration directly from her experiences as a diver, Abrigo cultivates a deeper understanding of the underwater world through her practice. While facilitating scientific communication through creative expression, her work offers an opportunity to reflect on humanity's relationship to the ocean, the future of the planet, and what can be done to include the collective connection to the natural world. Visit www.haylahabrego.com and follow @haylahabrego on Instagram.

15. MARÍA CORTÉS, a Madrid-based artist, blends vibrant colour and delicate landscapes with the refined eye of a connoisseur shaped by years dealing with Old Masters. Her paintings evoke symbolic worlds of emotion and stillness, where visual poetry unfolds in a timeless dialogue. Discover her new online exhibition "The Leopard's Journey" at mariaconcorart.com. Visit mariaconcorart.com or follow @mariaconcorart on Instagram.

To appear on this page, call: 020 732 5205 or email dawn@gondwanaz.co.uk

MARÍA CORTÉS



MARÍA CORTÉS